



ARTIST PHOTOS + BIOS



Artist : Architects of Air (United Kingdom)
Installation : Mirazozo Luminarium

The artist collective, Architects of Air, install monumental inflatable sculpture known as luminaria. Luminarium are large enough for people to enter and walk through for a sensory experience within the cavity of the sculpture. Visitors who experience a luminarium are often moved to a sense of wonder at the beauty of light and color and are excited to discover how different colors blend or resonate altering the visual world.

Since 1992, Architects of Air, have had over 500 exhibitions in 38 countries across 5 continents. Over 2 million visitors to the luminaria have immersed themselves in the spectacular, luminous world of Architects of Air. No two visits to a structure are alike as the atmosphere inside alters according to changing weather and changing light outside. The experience is also affected by how the public inhabits the luminarium.



Artist : **Matthew Geller (Manhattan)**
Installation : **Woozy Blossom**

Matthew Geller's outdoor sculpture, *Woozy Blossom*, is a sixteen-foot-high perforated steel tree that produces a continuous fog, inviting visitors to be engulfed in its mist and revel in its cool, moist air. The fog is in a constant state of flux, sensitive to the slightest changes in wind, temperature, and humidity.

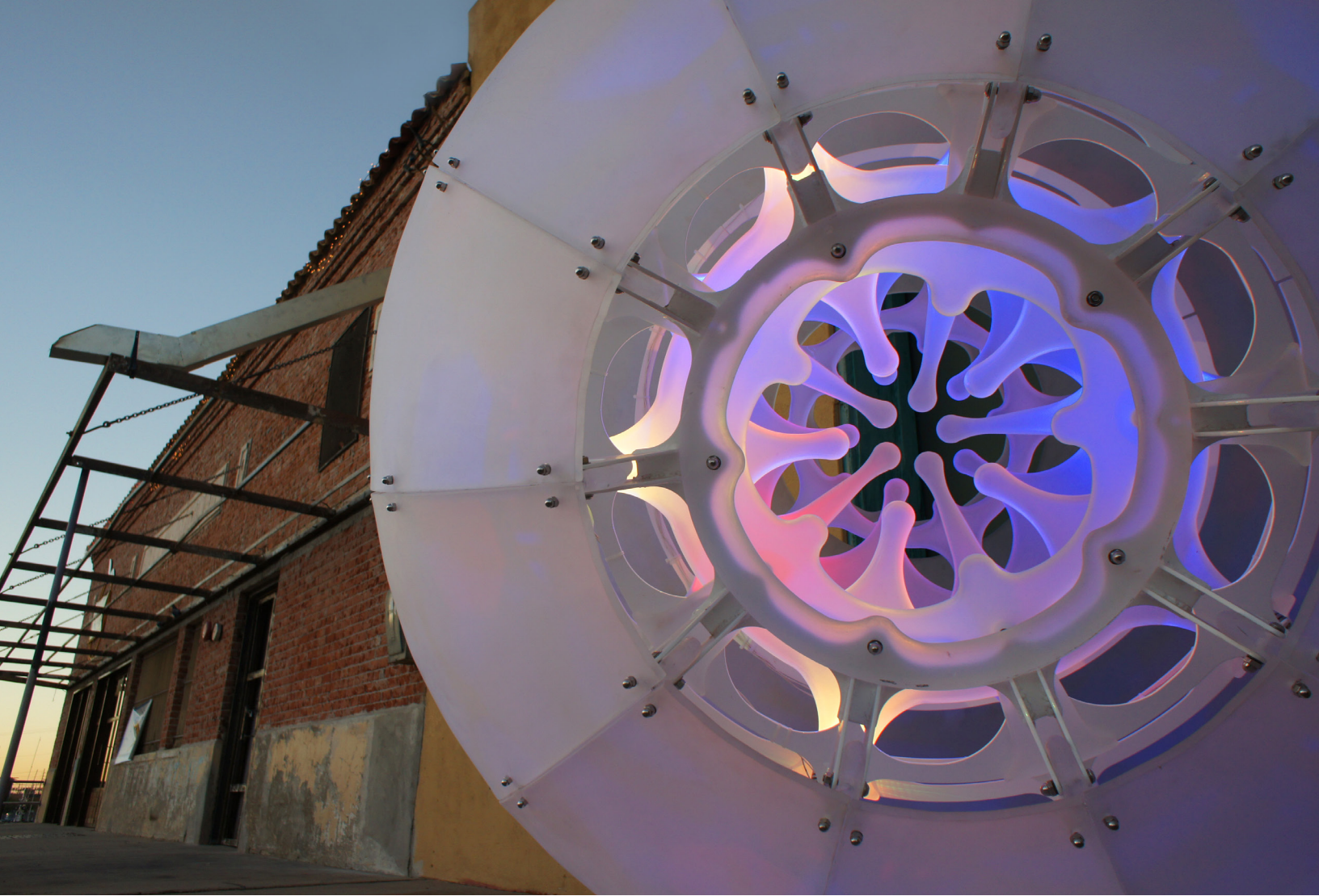
Geller sets out to engage the public and foster a sense of community with his outdoor experiential sculpture and fog installations. The works are playful, accessible, and very often unexpected. By using disparate elements including everything from mist, to swings, to showers, to wind-powered elements in surprising and interactive ways, his work aims to disarm and enchant, which encourages engagement with the work and among viewers themselves. Notably, Geller's work is in the permanent collections of the Whitney Museum of American Art, and the Museum of Modern Art in New York City.



Artist : **Wise Fool (Santa Fe)**
Installation : **Flexion**

Wise Fool combines the art forms of circus performance and puppetry, to mixing visual and performing arts through colorful costumes, graceful acrobatic skills, and storytelling. This unique combination draws in audience members of all ages and walks of life to a Wise Fool performance.

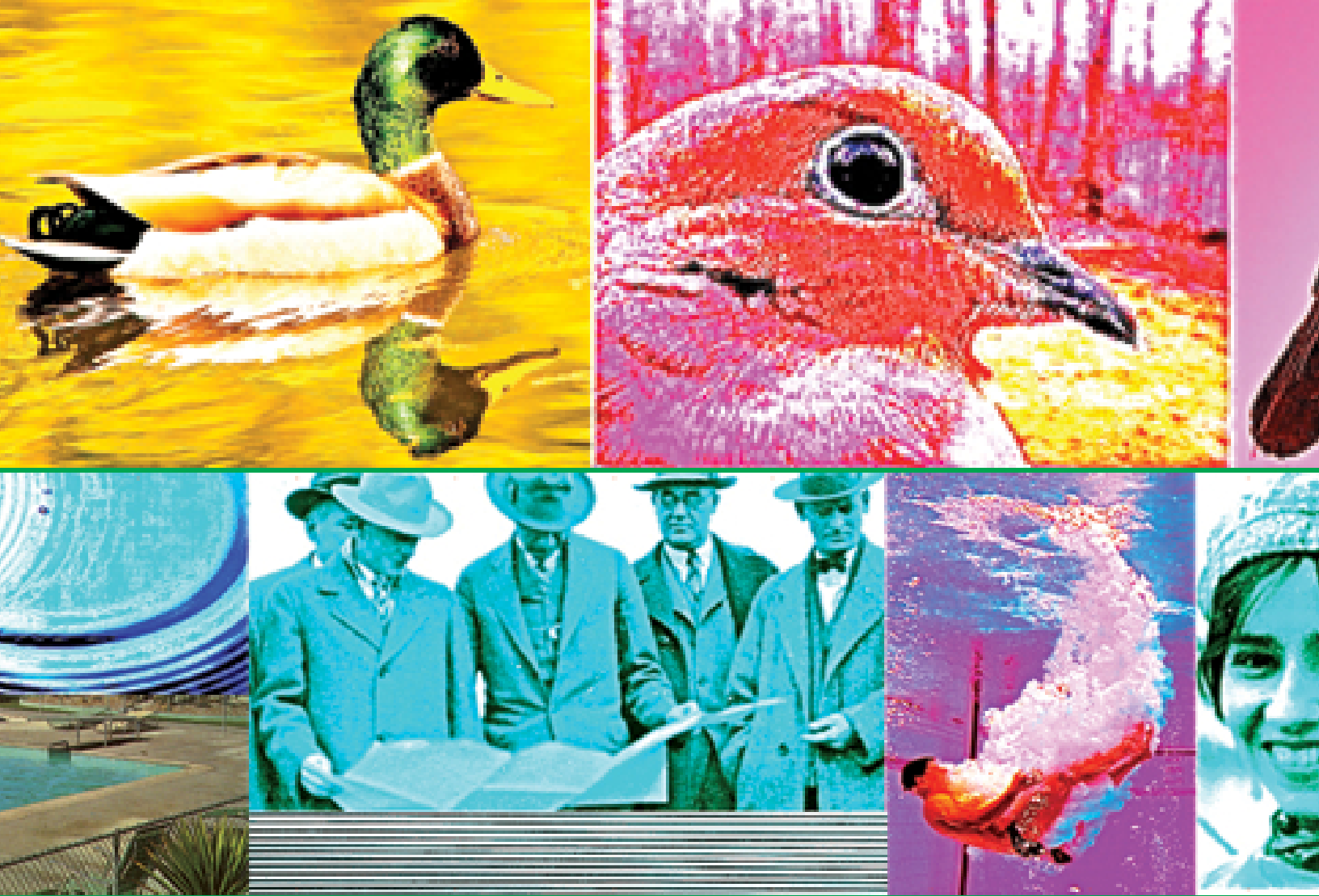
Chalk the Block will feature Wise Fool's "Flexion" performance which features five acrobats on stilts rolling into backbends, splits and a myriad of sculptural forms which literally stretch one's perception of the human body. Strutting and dancing, suspended and flying, their pincer-like metal legs slice the air as they spin and swim like fencers in a sea, barely missing each other in their fervent exploration of their metal home.



Artist : Creative Machines (Tucson)
Installation : Seed Pod

Creative Machines artwork, *Seedpods*, is an interactive public art piece inspired by primitive plant and animal life forms. Visitors interact with the larger than life biomorphic sculptures through a touch-sensitive lighting design.

The mission of Creative Machines is to create objects and environments that encourage creativity, support social interaction, and inspire self-confidence. Creative Machines exhibits invite visitors to walk up and try something even if they don't know what will happen. The exhibit rewards the initial trust offered by the visitor and offers them significant freedom to create and explore.



Artist : Adrian Esparza (El Paso)
Installation : Weaving Wall

For *Weaving Wall*, artist Adrian Esparza, incorporates images that the artist dissects into strips to be woven together through a chain-link fence to form a site specific work in the Downtown Arts District. The result is one unique composition of several images that include vintage photographs of downtown El Paso selected from the Otis A. Aultman Photo Collection from the Border Heritage Center at the Main Library, intertwined with contemporary images of El Paso collected from recent tourism banners, combined through the practice of weaving. The process is collective, as the artist provides the material and site, and participants over the course of Chalk the Block are invited to perform the weaving and ultimately form the final composition for *Weaving Wall*.

Esparza was selected as an artist in residency at Artpace San Antonio. Additionally, his work was included in the Istanbul Biennial, as well as exhibitions in Berlin and Lucerne.